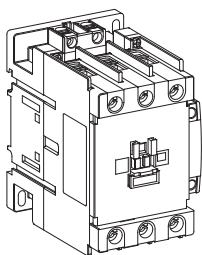
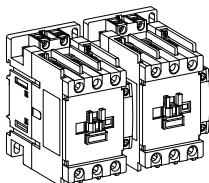


**Ex9C40/50/65/80/100 General Purpose Contactor**



Z9C3201401NA

**Ex9CR40/50/65/80/100 Horizontal Reversing General Purpose Contactor**



**WARNING**

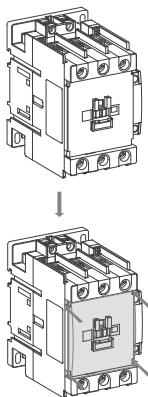
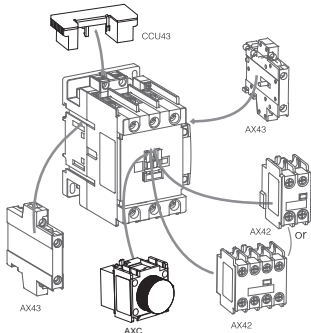
**DO NOT ATTEMPT TO INSTALL OR PERFORM MAINTENANCE ON EQUIPMENT WHILE IT IS ENERGIZED. DEATH, SEVERE PERSONAL INJURY, OR SUBSTANTIAL PROPERTY DAMAGE CAN RESULT FROM CONTACT WITH ENERGIZED EQUIPMENT. ALWAYS VERIFY THAT NO VOLTAGE IS PRESENT BEFORE PROCEEDING WITH THE TASK, AND ALWAYS FOLLOW GENERALLY ACCEPTED SAFETY PROCEDURES.**

**NOARK IS NOT LIABLE FOR THE MISAPPLICATION OR MISSAPPLICATION OF IT'S PRODUCTS.**

Code	Model	A	B	C	D	E	F	G	H	I	J
					AWG [mm <sup>2</sup> ]	AWG [mm <sup>2</sup> ]	AWG [mm <sup>2</sup> ]	AWG [mm <sup>2</sup> ]	AWG [mm <sup>2</sup> ]	AWG [mm <sup>2</sup> ]	
Ex9C40/50/65 Ex9CR40/50/65	M8	53Lb.in [6N.m]	M3.5 15Lb.in [1.7N.m]		14~4AWG 2.5~25mm <sup>2</sup>	14~4AWG 2.5~25mm <sup>2</sup>	14~4AWG 2.5~25mm <sup>2</sup>	14~4AWG 2.5~25mm <sup>2</sup>	14~4AWG 2.5~25mm <sup>2</sup>	14~4AWG 2.5~25mm <sup>2</sup>	0.6 in 15 mm
Ex9C80/100 Ex9CR80/100	M10	80Lb.in [9N.m]			12~10AWG 2.5~50mm <sup>2</sup>	12~1AWG 2.5~50mm <sup>2</sup>	12~10AWG 2.5~50mm <sup>2</sup>	12~1AWG 2.5~50mm <sup>2</sup>	12~10AWG 2.5~50mm <sup>2</sup>	12~1AWG 2.5~50mm <sup>2</sup>	0.7 in 18 mm

- AX42 Auxiliary contact (top mounting)
- AX43 Auxiliary contact (side mounting)
- AXC Time delay
- CCU43 Surge arrester

Note: CCU43 is not needed for Ex9C 'F' Type



**Warning!**

**Motor may start automatically. Automatic start may injure persons and damage machines. Automatic restart is possible when "automatic reset" is active.**

**Avertissement !**

**Le redémarrage automatique du moteur peut provoquer des dégâts matériels et être dangereux pour personnes. Ce danger du redémarrage automatique correspond au mode «réarmement automatique».**

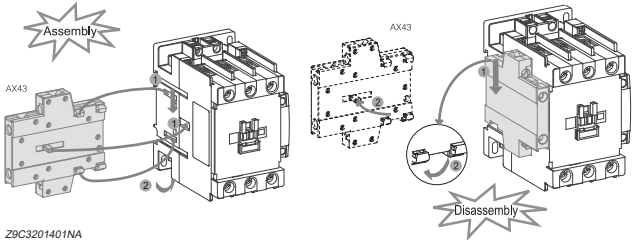
**¡Advertencia!**

**El motor puede arrancar automáticamente. El arranque automático es posible cuando el "botón de reset" está en posición automático y el circuito de maniobra activado.**



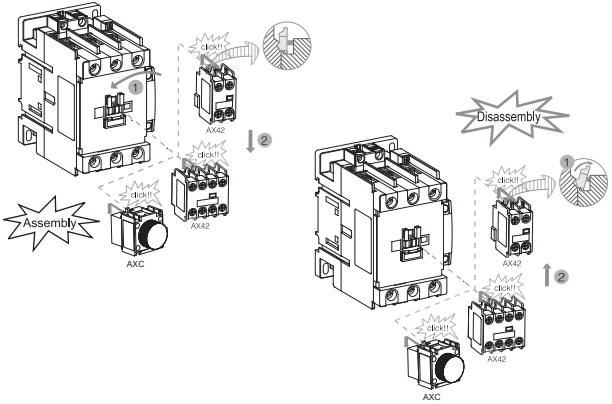
**Dangerous Electrical Current!**  
**Only skilled qualified persons may carry out the following operations.**  
**Tension électrique dangereuse!**  
**Seules les personnes qualifiées et averties doivent exécuter les travaux ci-après.**

**¡Corriente eléctrica! ¡Peligro de muerte!**  
**El trabajo a continuación descrito debe ser realizado por personas cualificadas y advertidas.**

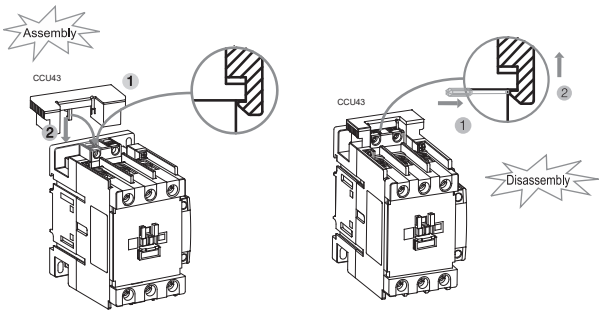


Z9C3201401NA

5/8



6/8

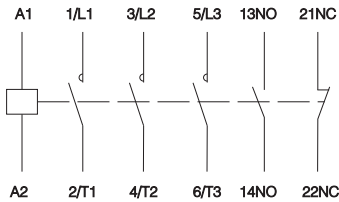


Note: CCU43 is not needed for Ex9C 'F' Type



**Disconnect all power before working on equipment.**  
**Coupez toutes les alimentations avant de travailler sur l'équipement.**  
**Desconecte la alimentación antes de trabajar en equipo.**

7/8



**Device must be installed in an enclosure sized 280mm x 280mm x 240mm at a minimum.**

8/8

**NOARK**



Printed with environment-friendly paper

Copyright Noark. All Rights Reserved

www.noark-electric.com

12/2019